

**IMPORTACIONES 2017**  
**VOLUMEN POR PRODUCTO ENERO-DICIEMBRE 2017**

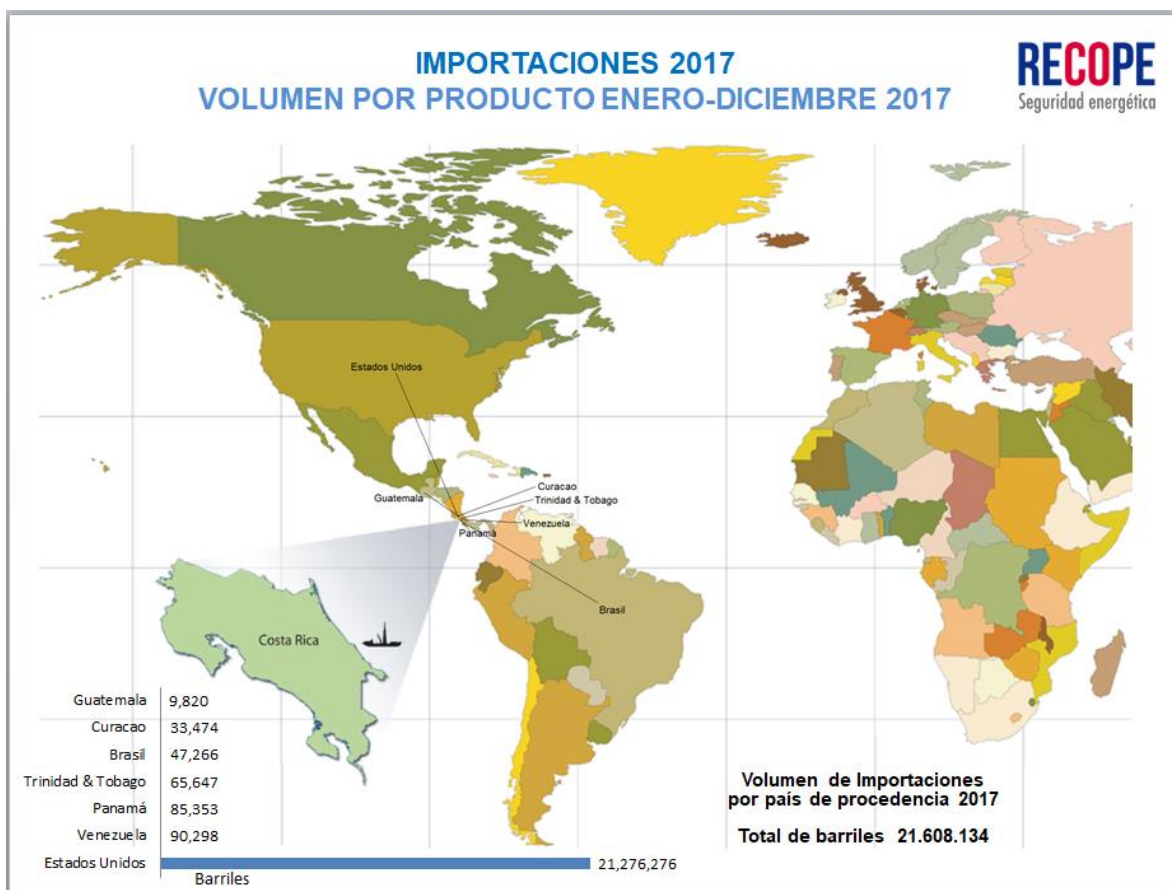
<b>RECOPE</b>			
<b>IMPORTACIONES POR PRODUCTO</b>			
<b>ENERO-DICIEMBRE 2017</b>			
<b>HIDROCARBUROS</b>		<b>VOLUMEN</b>	<b>MONTO</b>
		<b>BARRILES</b>	<b>(Dólares)</b>
<b>PRODUCTO</b>	ASFALTO AC-30	661,168	33,061,428
	AVGAS	10,031	1,467,379
	DIESEL 0.0015% S	7,844,039	520,676,471
	FUEL OIL 3% S	779,241	37,752,764
	GASOLINA RON 91	4,061,389	265,986,712
	GASOLINA RON 95	4,400,149	303,055,967
	JET FUEL	1,757,585	120,890,191
	LPG	2,025,293	85,241,038
	MTBE	69,240	6,453,320
<b>TOTAL</b>		<b>21,608,134</b>	<b>1,374,585,270</b>

## IMPORTACIONES 2017

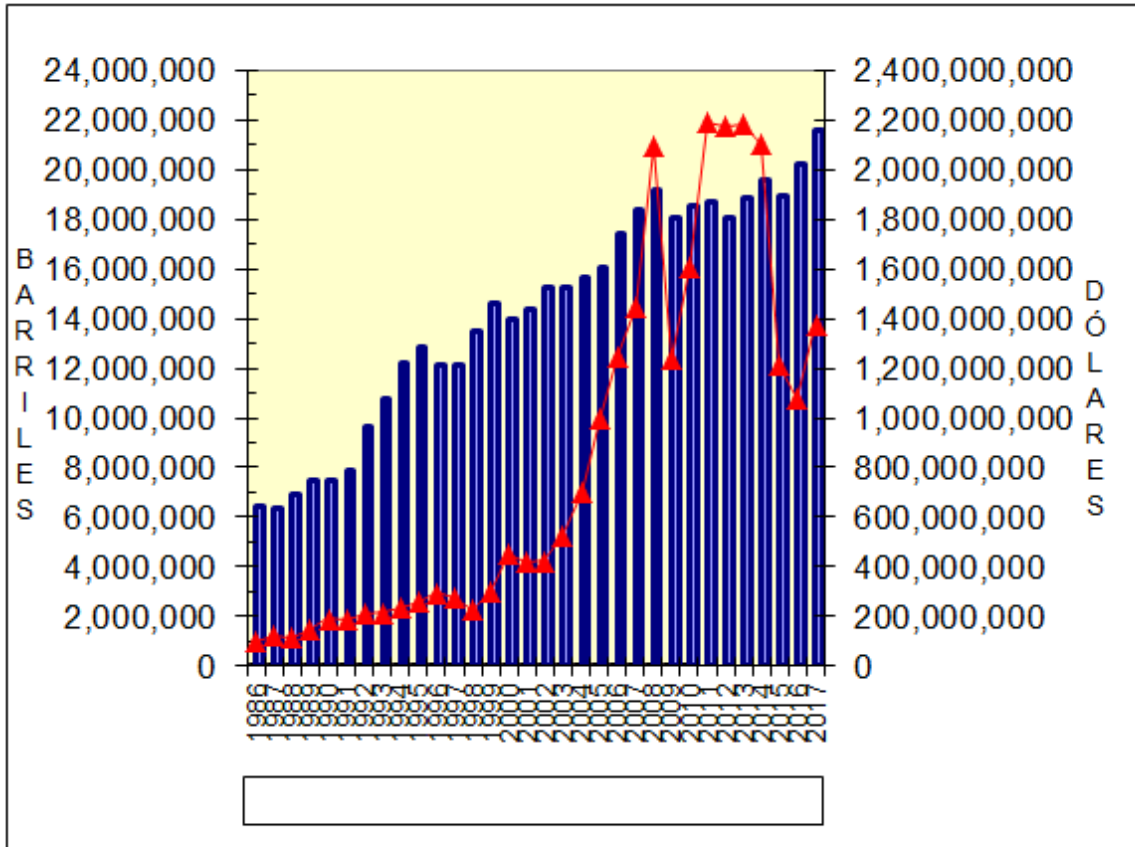
### VOLUMEN POR PRODUCTO ENERO-DICIEMBRE 2017

RECOPE IMPORTACIONES ANUALES DE HIDROCARBUROS EN BARRILES Y MONTO CIF 2017				
AÑO	VOLUMEN BARRILES	MONTO CIF \$	PRECIO CIF \$/BARRIL	PRECIO CIF \$/BBL
1986	6,424,561	101,849,041	15.85	15.85
1987	6,388,362	121,086,856	18.95	18.95
1988	6,951,695	114,150,180	16.42	16.42
1989	7,491,059	147,878,260	19.74	19.74
1990	7,481,530	191,785,580	25.63	25.63
1991	7,919,333	185,875,718	23.47	23.47
1992	9,622,404	211,909,324	22.02	22.02
1993	10,751,511	215,402,962	20.03	20.03
1994	12,188,569	235,373,779	19.31	19.31
1995	12,848,122	259,067,858	20.16	20.16
1996	12,137,378	296,414,462	24.42	24.42
1997	12,090,545	276,650,864	22.88	22.88
1998	13,450,649	228,663,639	17.00	17.00
1999	14,603,915	298,439,550	20.44	20.44
2000	13,955,086	455,418,379	32.63	32.63
2001	14,400,595	420,549,702	29.20	29.20
2002	15,267,615	423,511,908	27.74	27.74
2003	15,222,032	525,940,911	34.55	34.55
2004	15,685,416	699,309,117	44.58	44.58
2005	16,078,701	997,841,299	62.06	62.06
2006	17,394,173	1,249,009,575	71.81	71.81
2007	18,369,405	1,444,048,516	78.61	78.61
2008	19,167,453	2,091,011,849	109.09	109.09
2009	18,062,249	1,239,536,441	68.63	68.63
2010	18,530,723	1,604,351,458	86.58	86.58
2011	18,714,224	2,189,340,880	116.99	116.99
2012	18,024,460	2,175,639,176	120.70	120.70
2013	18,864,093	2,181,766,830	115.66	115.66
2014	19,574,156	2,105,832,298	107.58	107.58
2015	18,939,512	1,214,954,378	64.15	64.15
2016	20,208,666	1,073,562,341	53.12	53.12
2017	21,608,134	1,374,585,270	63.61	63.61

## IMPORTACIONES 2017 VOLUMEN POR PRODUCTO ENERO-DICIEMBRE 2017



**IMPORTACIONES 2017**  
**VOLUMEN POR PRODUCTO ENERO-DICIEMBRE 2017**



**PRECIO CIF PAGADO POR RECOPE  
\$/BBL**